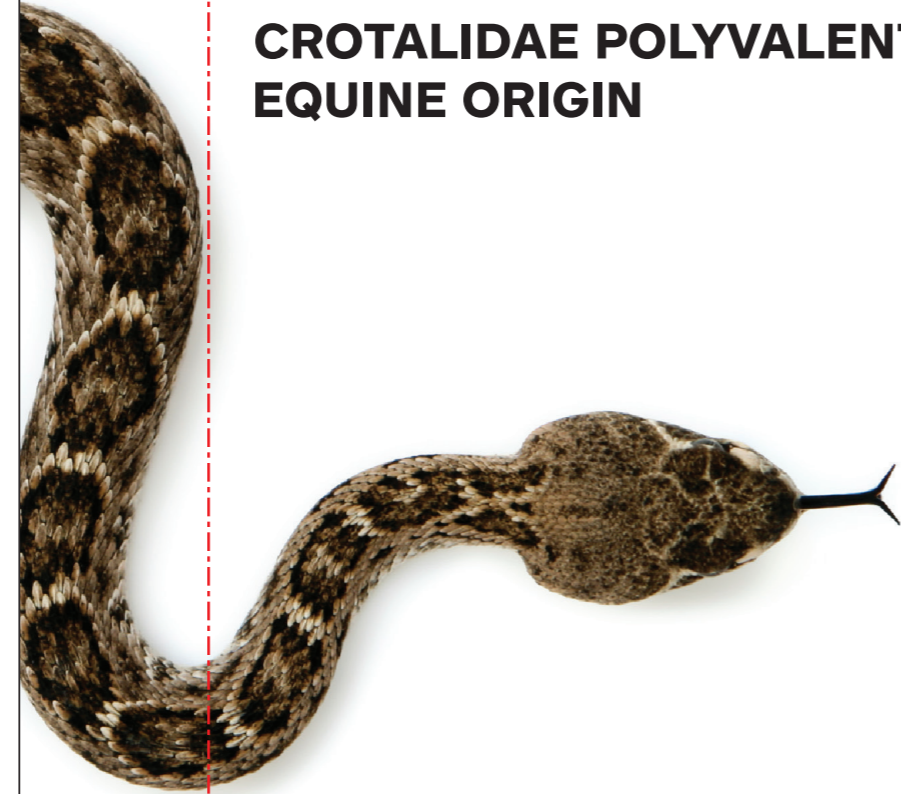


mgbiologics.com

RATTLERANTIVENIN

ANTIVENIN ANTIVENIN ANTIVENIN ANTIVENIN ANTIVENIN



# ANTIVENIN CROTALIDAE POLYVALENT EQUINE ORIGIN



RATTLERANTIVENIN™

Shown to be effective against envenomation due to North American Crotalidae.



PROUDLY MADE IN THE USA.

RATTLERANTIVENIN



ANTIVENIN ANTIVENIN ANTIVENIN ANTIVENIN ANTIVENIN

## ANTIVENIN CROTALIDAE POLYVALENT EQUINE ORIGIN

### RATTLERANTIVENIN

**Use:** Rattler Antivenin is shown to be effective against envenomation in canine, equine, and feline due to North American Crotalidae. Crotalidae refers to cottonmouths/water moccasins, copperheads, and rattlesnakes.

Use of Rattler Antivenin within 24 hours of snakebite neutralizes venom, decreases swelling, minimizes pain and decreases temperature of canine, equine, and feline patients. Rattler Antivenin contains antivenom antibodies collected from healthy horses immunized against Western Diamondback Rattlesnake, Eastern Diamondback Rattlesnake, Prairie Rattlesnake, and Mohave Rattlesnake Type A.

**Administration:** Warm to body temperature using a warm water bath prior to administration. **Feline:** Administer to effect intravenously using a filtered IV set at 2-3 mL/kg/hour. **Canine and Equine:** Administer to effect intravenously using a filtered IV set over a 20-60 minute period. One to two 50ml doses will be sufficient in most cases regardless of body size (feline, small canine, large canine, and equine).

Administer Rattler Antivenin as is, without reconstitution or dilution. Do not mix this product with other fluids. As with any antivenin, additional fluids and supplemental therapies can be used. Use professional judgment.

**Age and Species: Canine:** Safe for use eight weeks and older. Rattler Antivenin has not been evaluated in pregnant or lactating bitches. **Equine:** Safe for use in adult horses. Rattler Antivenin has not been evaluated in gestating or lactating mares. **Feline:** The approved age for administration is 12 weeks-of-age or older. No data is available for pregnant or lactating queens.

**Ingredients:** Equine-derived Crotalidae Polyvalent Antivenin, Sodium Citrate

**Caution:** Every reasonable precaution has been taken to safeguard this product. There is always the possibility, while rare, of adverse events. Hypersensitivity reactions could occur in all species. Please review your patient's history of receipt of equine protein products prior to administration. In case of human exposure, contact a physician.

Store frozen below -5°C (23°F) until use.

See package insert for detailed product information.

Restricted to use by or under the direction of a licensed veterinarian.

Contains one 50ml dose.

RATTLERANTIVENIN

Mg Biologics

mgbiologics.com | (877) 769-2340 | Ames, IA 50014

VLN 614 / PCN 6101.01

V.7-2022